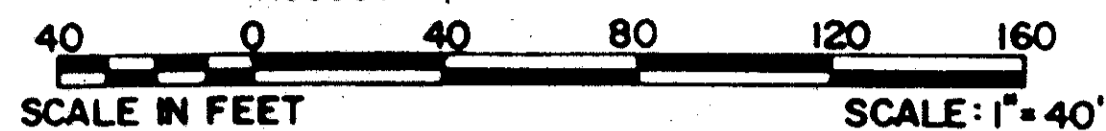


LAKEFIELD OF THE LANDINGS AT WELLINGTON P.U.D. - PLAT 2A

IN PART OF SECTION 7 AND 18, TOWNSHIP 44 SOUTH, RANGE 41 EAST

PALM BEACH COUNTY, FLORIDA
IN NINE SHEETS SHEET NO. 7

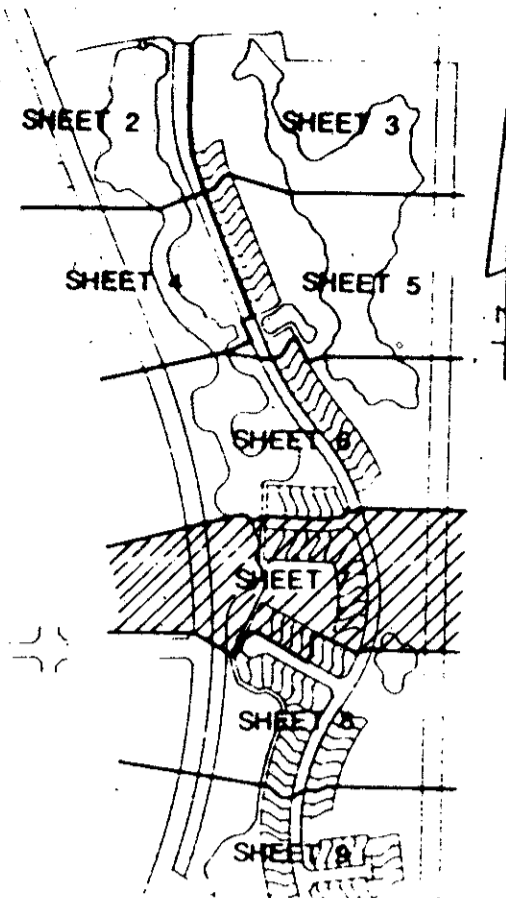
GEE & JENSON
ENGINEERS - ARCHITECTS - PLANNERS, INC.
WEST PALM BEACH, FLORIDA
AUGUST 1989



103

STATE OF FLORIDA
COUNTY OF PALM BEACH
This plat was filed for
record at _____ M. this _____ day
of _____ 1989, and duly
recorded in Plat Book No. _____
on Pages _____ thru _____.

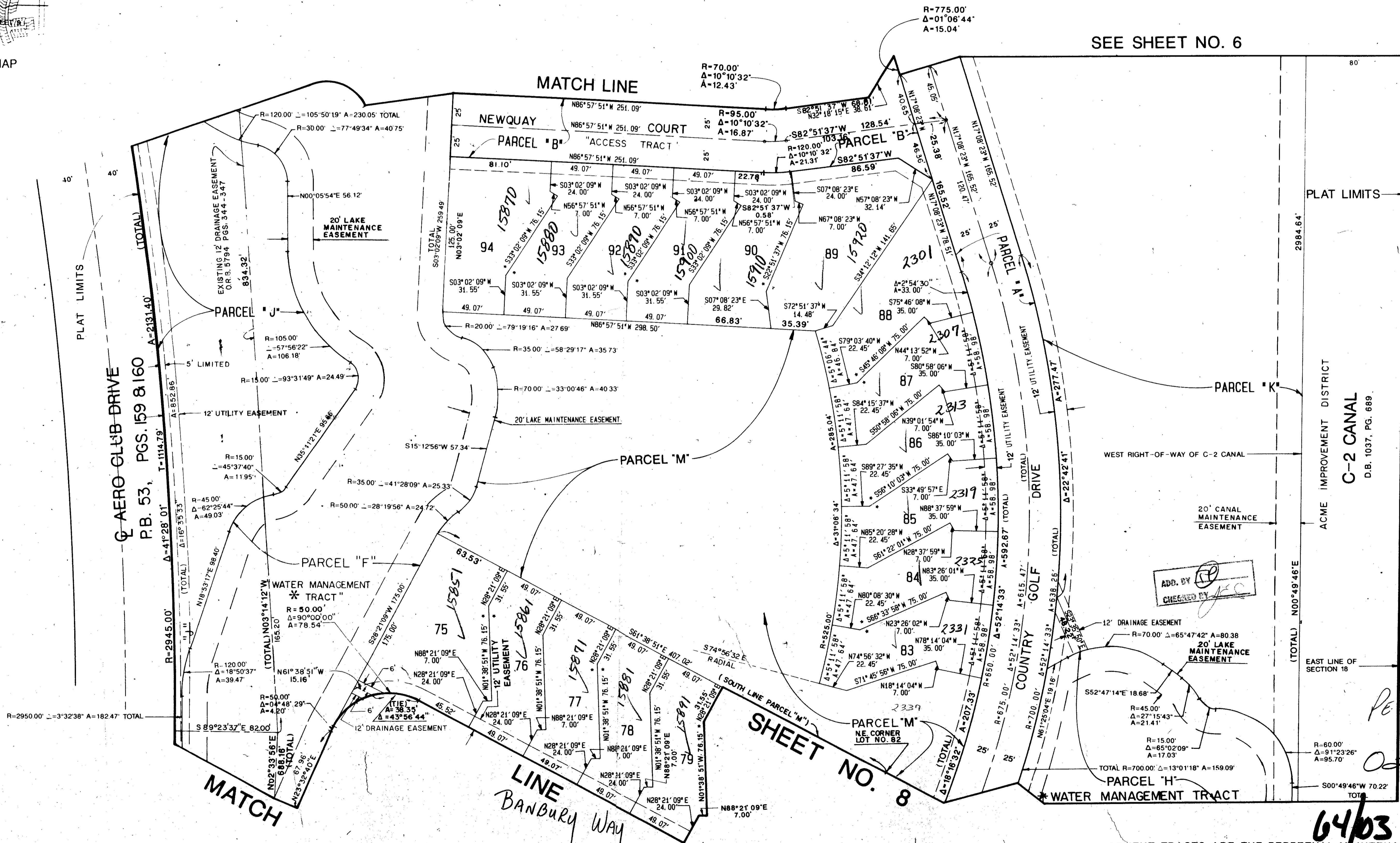
JOHN B. DUNKLE
Clerk Circuit Court
By: _____ D.C.



KEY MAP

SEE SHEET NO. 6

WELLINGTON AERO CLUB OF THE LANDINGS
AT WELLINGTON P.U.D.
P.B. 38, PGS. 159-164



Subdivision of Lakefield of the Landings
BOOK 64 - PAGE 103
PLAT 2A - P.B. 38 PGS. 159-164
DATE 7-7-89
BY J.B. DUNKLE
FUD NAME Wellington P.U.D.
TAZ 728

COMPUTED P.W.L./C.A.D.
DRAWN P.W.L./C.A.D.
CHECKED H.J.J.
APPROVED F.H.D.

NOTE: ALL LINES ARE RADIAL UNLESS OTHERWISE NOTED!

* WATER MANAGEMENT TRACTS ARE THE PERPETUAL MAINTENANCE OBLIGATION OF THE LAKEFIELD HOMEOWNERS ASSOCIATION, INC.

LAKEFIELD OF THE LANDINGS AT WELLINGTON P.U.D. - PLAT 2A

Ret. 78-287
0269-008

64/03